

**APPENDIX T: CONTOURS BEYOND 65 DNL FOR 2014 WITH
OPERATIONAL RECOMMENDATIONS**

EXISTING POPULATION WITHIN DNL CONTOUR AREAS

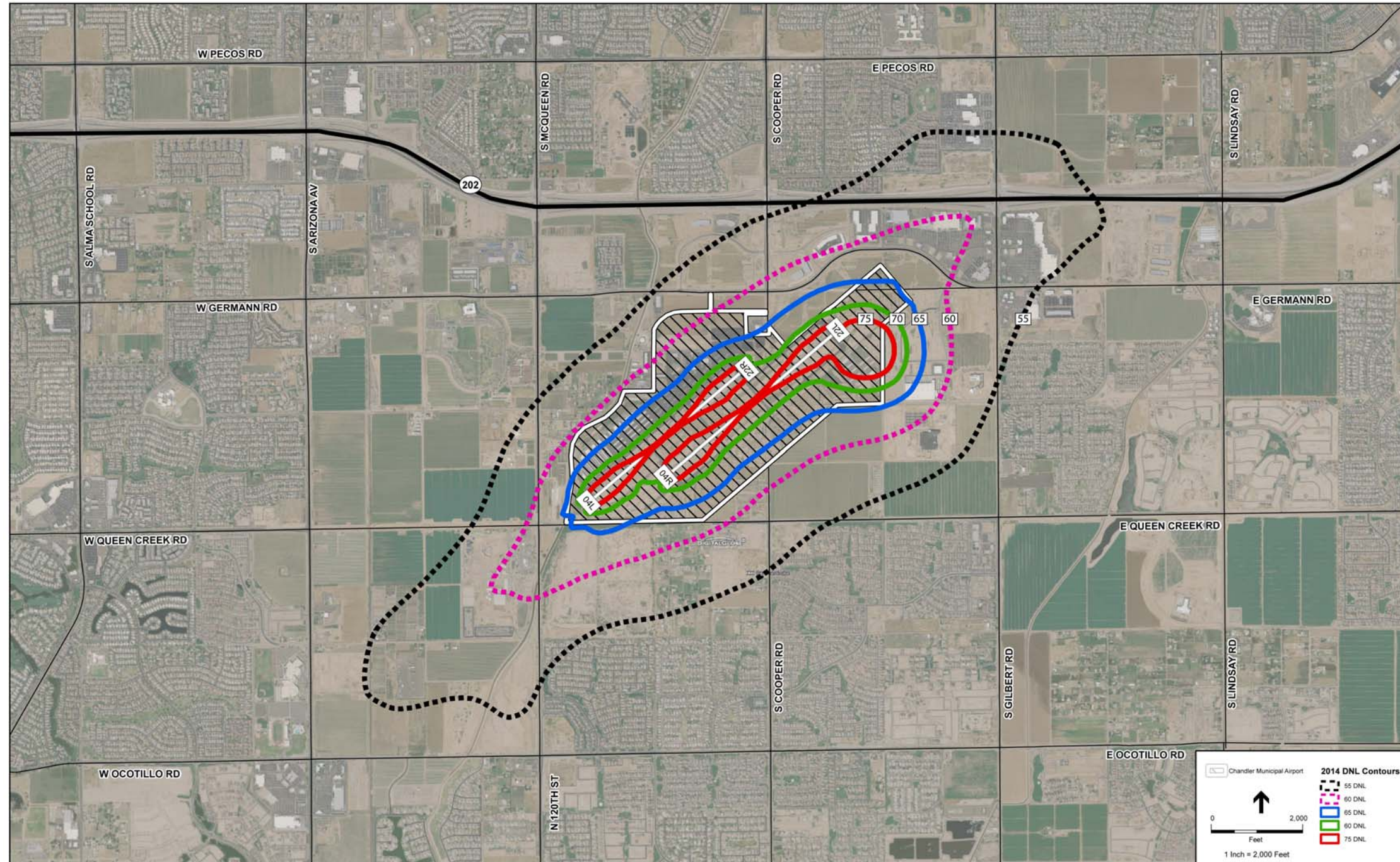
To estimate the population within the 60 DNL and 55 DNL contours, a 2008 aerial was used to determine the housing units and 2000 census information was used to determine average household population. As shown below in **Figure T.1**, within the 2014 55 DNL contour there are estimated to be 236 housing units and an estimated population of 750 people. Within the 2014 60 DNL contour, there are estimated to be 10 housing units and an estimated population of 34 people. This information is being provided for land use planning purposes only. The FAA considers residential land uses to be compatible with contours of 64 DNL and lower. **Table T.1** provides a summary of the housing units and population located within the future contours that include the operational recommendations from the Study.

Table T.1
2014 DNL CONTOUR POPULATION SUMMARY

Contour Range	Housing Units	Population
55-59 DNL	236	750
60-64 DNL	10	34
65-69 DNL	0	0
70-74 DNL	0	0
75+ DNL	0	0

Chandler Municipal Airport/FAR Part 150 Study

Figure T.1
2014 DNL CONTOURS WITH OPERATIONAL RECOMMENDATIONS



SOURCE: City of Chandler, 2008; Town of Gilbert, 2006; City of Mesa, 2008; Town of Queen Creek, 2008; Wilbur Smith Associates, 2008; ESRI, 2008; and ESA, 2009